



PTFA NEWSLETTER

Lyne and Longcross CofE Primary School and Nursery

WELCOME BACK to all the Lyne and Longcross families!

And a big WELCOME to our new families as well as the Rabbits class as you start your school journey. We hope all the children are settling in/back in to our lovely little school. As the Parents, Teachers and Friends Association we raise money to buy some of those extra things that the school budget can't stretch to.

Last year we raised £7,851.38 and, as you can see below, this helped to fund things like the transport for KS2 swimming, workshops for all year groups, Jubilee gifts, Christmas grotto gifts and Year 6 leavers gifts. But we can't do this without your support whether that is joining the 2021/22 committee, being part of the fundraising support team or just attending events and buying goodies - every bit of help we get is passed on to our children in one way or another.

This newsletter will come out each term via Parentmail and on the class WhatsApp groups to inform you about PTFA news, upcoming events and how we have spent funds raised.

If there is anything else you would like to see included in this newsletter, please speak to Charlotte Petrides or email the PTFA direct.



We start 22/23 with a balance of £3470.04!

PTFA AGM - 22nd September 2022

(All reports including the headmaster's notes and AGM minutes available on ParentMail)

Our sincere thanks to all the 20 parents and teachers who joined our annual meeting on 22nd September to review the annual reports, elect a brand new committee and to brainstorm a calendar of engaging fundraising ideas. We truly appreciate your commitment to these meetings and really look forward to the extra support with this year's exciting initiatives. We are pleased to announce we have a new committee including Kate Kubicki and Charlotte Petrides sharing the role as co-chair, Olga Christofi as Treasurer and Celia Gatward and Rachel Prance-Beresford co-sharing the Secretary role.

PTFA Primary Objectives this Year : Raising vital funds for the school whilst enriching the children's school experience.

Fundraising Ideas: Class bake sales, quiz night, book of poems written by the children, make the rules day, L&L Coffee Stop, skills auction, tea towels, sponsored run, clothes swap (world book day / coats) and the continuation of our pre-loved uniform sales.

Upcoming Christmas Events Discussed: Personalised Christmas cards, hamper raffle, festive disco and Santa's grotto.

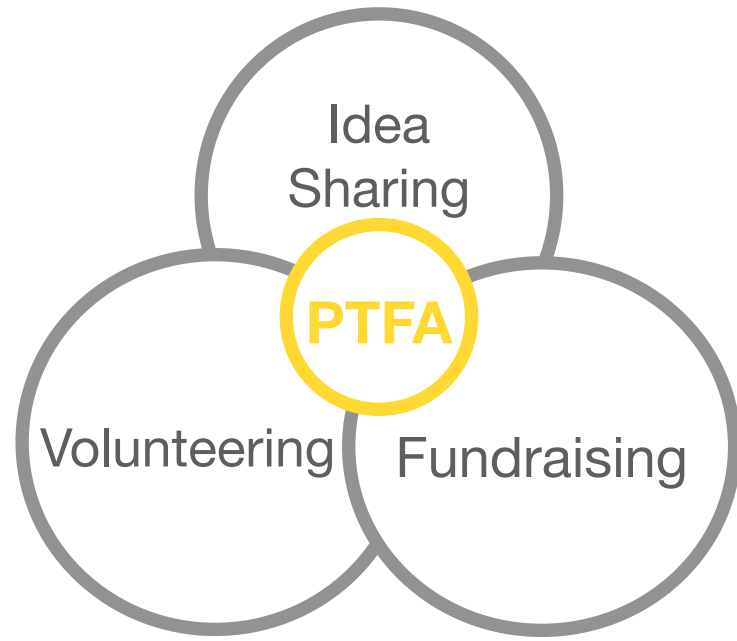
If you have any new fundraising ideas you would like to share or if you are keen on offering your time as a volunteer for our upcoming events please contact a committee member.



PTFA NEWSLETTER

Lyne and Longcross CofE Primary School and Nursery

PTFA Key Aims



So what is new for 2022/23?

- Dedicated PTFA School liaison
- 4 New PTFA committee members
- 16 New PTFA class representatives
- A new and exciting, fundraising goal...(to be confirmed)!
- Improvements to the use of the school website
- Enhanced communication via the school office / noticeboard
- Regular meetings every term
- New website launch - a 'true' PTFA hub - watch this space!
- Improvements on how we pay - (cashless payments)
- Enhanced collaborations with Lyne Village Hall and Holy Trinity Church

Meet your L&L PTFA Committee



Co-Chair
Charlotte Petrides



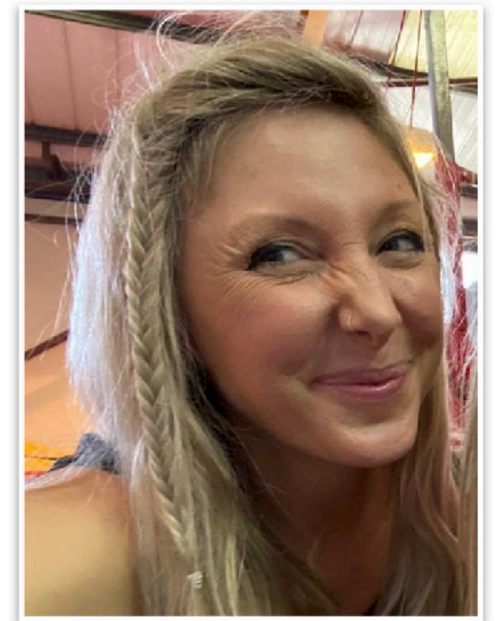
Co-Chair
Kate Kubicki



Treasurer
Olga Christofi



Co-Secretary
Celia Gatward



Co-Secretary
Rachel Prance-Beresford

Meet your L&L PTFA Class Representatives

Nursery



Bronwen Pughe-Amore and Olivia Pavli

Rabbits - Reception



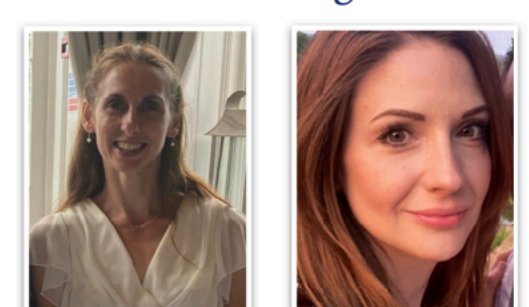
Lauren Newson and Michelle Watson

Year 1 - Hedgehogs



Becky Channon and Valery Matias

Year 2 - Badgers



Gemma Manwaring and Victoria Fraser-Gadd

Year 3 - Squirrels



Olivia Pavli and Angela Roseveare

Year 4 - Foxes



Rose Mann and Anne Huet

Year 5 - Otters



Rachel Prance Beresford and Emma Burgess

Year 6 - Owls



Liz Emelogu and Sally Turner

Meet the PTFA: Friday 14th October / 2pm-3pm / Holy Trinity Parish Hall

Come and enjoy a cuppa whilst meeting your new PTFA committee to find more about our exciting plans for the coming academic year. It will also be an opportunity for parents to share any fundraising events ideas you may have.

Make a difference and get involved. New faces and fresh ideas always welcome!



PTFA NEWSLETTER

WAYS YOU CAN HELP (with little effort, and at no extra cost)



The PTFA will be collecting donations of pre-loved L&L school uniform throughout the year in preparation for uniform sales. If you have any pre-loved items to donate please look out for our donation days or contact Sally Turner or Celia Goddard to make donations directly.

(Uniform donations should be in a condition that you would be happy for your child to wear.)



Do you ever shop on Amazon? Did you know you can raise money for the school every time you shop at no extra cost to you? Simply follow the instructions below to select Lyne and Longcross CofE PTFA as your charity.

How it works:

1. Open the Amazon app on your phone
2. Select the main menu (=) & tap on "AmazonSmile" within Programmes & Features
3. Select "Lyne and Longcross CofE School PTFA" as your chosen charity
4. Follow the on-screen instructions to activate AmazonSmile in the mobile app



Like Smile, Easyfundraising pays commission direct from online purchases to the school at no cost to you! Sign up to raise FREE donations every time you shop online with over 4,300 retailers. John Lewis, Argos, Uswitch, eBay and many more are waiting to give a free donation. Plus, once you've signed up and raised £5 in donations, easyfundraising will give us an extra £5 bonus donation.

Signup to support us here <http://www.easyfundraising.org.uk/invite/1e0u9i/>, click 'create account' at the top of the page and select Lyne and Longcross CofE School as your cause. Or you can download the app.

Match Funding - Would your company or employer like to boost their community focus and support our fundraising efforts with Match Funding? Many companies will match charitable fundraising activities undertaken by their staff. The school PTFA is a charity which often qualifies for these corporate donations. A match funding scheme can be adopted by any company, so please check with your employers whether a scheme is already in place that you can use, or if they would be willing to set one up. If your company is able to support the school in this way, please get in touch.

Stikins Name Labels - Simply Stick in, no sewing and no ironing. Save time and money with one multipurpose name label for cloths, shoes, lunchboxes and all school items. When you buy Stikins name labels and quote our fundraising number **12641** we will receive 30% commission for our school.

Volunteers and Donations - If you feel you could volunteer your time to support our fundraising events or would like to offer any other donations to the PTFA please email us.