



# PTFA NEWSLETTER

## Lyne and Longcross CofE Primary School and Nursery

### WELCOME BACK to all the Lyne and Longcross families!

And a big WELCOME to our new families as well as the Rabbits class as you start your school journey. We hope all the children are settling in / back into our lovely little school. As the Parents, Teachers and Friends Association our objective is to enrich our children's school experience by raising money to buy some of those extra things that the school's budget simply can't stretch to.

Last year, thanks to your support we raised an incredible **£16,205.12** and this helped to fund end of year class activities, Easter celebrations, Christmas crackers for the school lunch and Year 6 leavers gifts. We couldn't achieve these funds without your support so whether you joined the 2022/23 committee, supported ad-hoc events, volunteered as class rep. or simply just attended our events or purchased goodies throughout the year - every bit of help we get is passed on to our children in one way or another.

This newsletter will be published periodically and communicated via Parentmail and on the class WhatsApp groups to inform you about PTFA news, upcoming events and how we have spent funds raised. In this Autumn edition we do have some exciting news to share so please read on to find out more....

### PTFA AGM - 12th September 2023

**(All reports including the headmaster's notes and AGM minutes available on ParentMail)**

Our sincere thanks to all the parents and teachers who joined our annual meeting on Tuesday 12th September. We reflected on the year's achievements, reviewed the annual reports, elected a brand new committee whilst sharing a giggle or two. We truly appreciate your commitment to these meetings and really look forward to the extra support with this year's exciting initiatives.

**2022/23 PTFA Committee:** We sadly have to say goodbye to a number of the committee members this year including both Co-Chairs, Charlotte Petrides and Kate Kubicki who have been the driving force to our fundraising success. Spending hours behind the scenes planning, prepping and supporting nearly every event, we just couldn't have done it without them so thank you! We also say our farewell to Olga Christofi who gave us the expertise to tally the numbers behind the scenes and also Charlotte Evans who stepped in to the Co-Secretary role for the last few months of the year.

**2023/24 PTFA Committee:** The PTFA are now happy to announce and welcome a new committee including Bianca Michia and Constance Nicholls sharing the role as Co-Chair, Zannet Zisimopoulou as Treasurer and Tori Raphael as Co-Secretary role. Both Charlotte Petrides and Rachel Prance-Beresford will be continuing their key roles with the PTFA Committee for another year as Publicity and Co-Secretary respectively.

### Acknowledgements

PTFA Committee - Olga Christofi, Rachel Prance-Beresford, Celia Gatward and Charlotte Evans

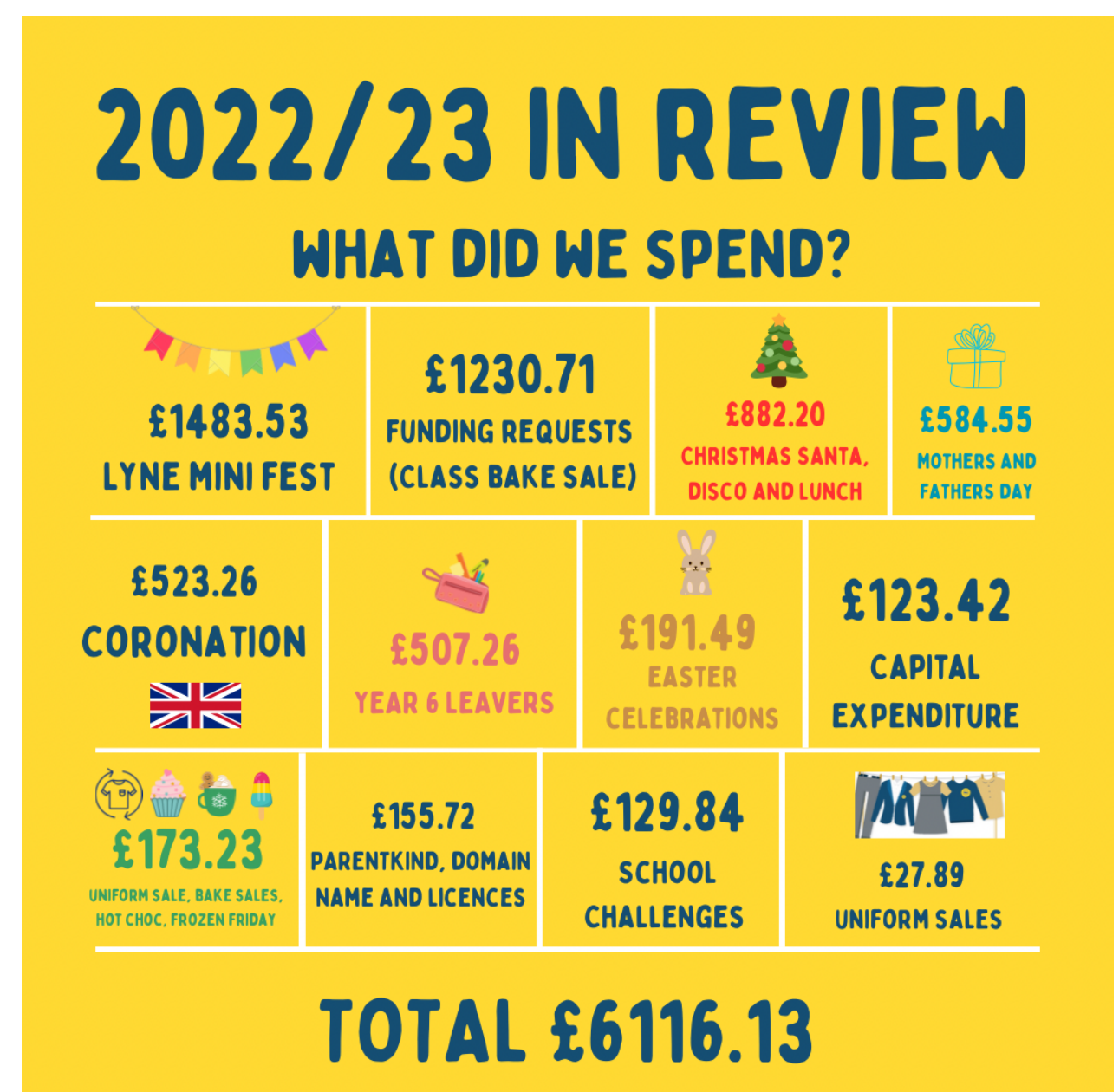
L&L School - Mr Haxell, Mrs Bodley, Sian Ratcliffe and Harriet Anderton

Pre-loved Uniform/Lost Property/Class Rep - Sally Turner

Class Reps - Olivia, Bronwyn, Lauren, Michelle Becky, Valery, Gemma, Victoria, Angela, Rose, Anna, Rachel, Emma and Liz

All parents, carers, teachers and pupils of L&L CofE Primary School

### Treasurer Report Summary 2022/23





# PTFA NEWSLETTER

Lyne and Longcross CofE Primary School and Nursery

## 2022/2023 ACHIEVEMENTS

28 Fundraising Events  
New PTFA branding  
Regular engagement through Facebook and new followers  
Return of the class bake sales to provide end of year class treats  
Contactless pay implemented using sum up machines  
Online fundraising introduced (Gofundme) - Extra funds raised through Giftaid  
Charity donations received from Aldi, Tesco, Co-op, Waitrose, Morrisons and local businesses  
Collaboration with Chertsey mens shed - A new L&L bug hotel made for our forest school

## NEW EVENTS

Jinglebell Jog - The biggest fundraiser of the year  
Mother's and Father's day gift shop  
Mlni Lyne Fest - End of year celebration with over 100 volunteers

**FUNDRAISING TOTAL - £16,205.12**

## FUNDRAISING BENEFITS

### L&L PTFA / MENS SHED

New Lyne Bug hotel in forest school

### BAKE SALE FUNDS

Nursery - Entertainer  
Reception and Year 1 - Assault course and ice-cream  
Year 2 - Bouncy Castle  
Year 3 - Magician  
Year 4 - Bean bags and educational books  
Year 5 - New books  
Year 6 - Bouncy Castle

### SEASONAL

Easter - Supplied Easter eggs for all children  
Christmas - Crackers for school lunch  
Santa gift - Chocolate gift

### YEAR 6

Leavers treat - laser tag/velocity paintball  
Leavers gifts - stationary sets

## Where is the money going to be spent?

The PTFA committee are thrilled to announce that a large proportion of the funds raised in 2022/23 will be spent on the upgrade of the technology provision at the school. This will include the investment of 30 brand new Google Chromebooks and also a contribution towards the new Phonics books for KS1.



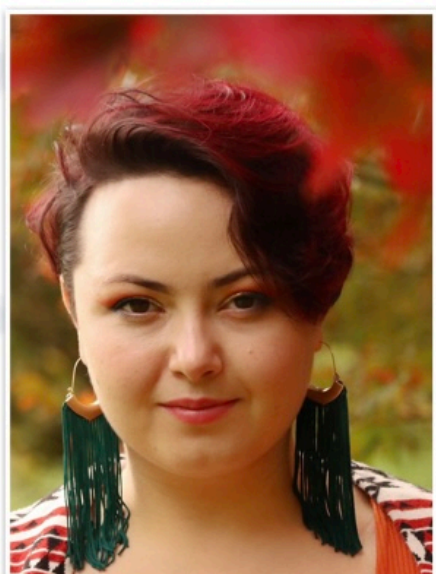
**Pending expenditure : £10,560**



**Pending expenditure : £1,659.10**

A massive thanks to each and everyone of you that have provided your help and contributions to our events throughout the year, we couldn't have done it without you!

## Meet your L&L PTFA Committee



Co-Chair  
Bianca Michia



Co-Chair  
Constance Nicholls



Treasurer  
Zannet Zisimopoulou



Co-Secretary  
Rachel Prance-Beresford



Co-Secretary  
Tori Raphael



Publicity  
Charlotte Petrides

**Make a difference and get involved. New faces and fresh ideas always welcome!**



# PTFA NEWSLETTER

## MEET YOUR 2023/24 CLASS REPS...

Nursery



Celia Goddard

Rabbits - Reception



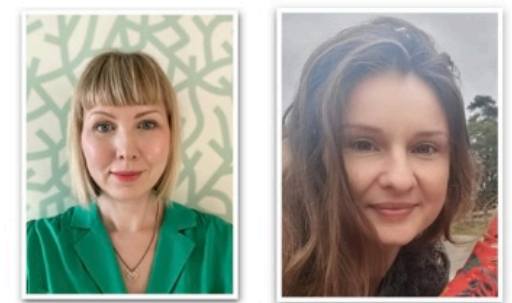
Bronwen Pughe-Amore

Year 1 - Hedgehogs



Sejal Mair and Katie Meaden

Year 2 - Badgers



Alexandra and Andreea

Year 3 - Squirrels



Helena Matthews and Anamaria Nita

Year 4 - Foxes



Becky Channon and Angela Roseveare

Year 5 - Otters



Laura Barton-Wright and Emily

Year 6 - Owls



Carlie Baughan and Jo Liggett

## WAYS YOU CAN HELP (with little effort, and at no extra cost)



The PTFA will ONLY be collecting pre-loved, branded L&L school uniform throughout the year in preparation for uniform sales. If you have any items you would like to donate please look out for our donation days or hand to Sian in the school office. Please do not leave any other items

(Branded uniform donations should be in a condition that you would be happy for your child to wear.)



**Easyfundraising** pays commission direct from online purchases to the school at no cost to you! Sign up to raise FREE donations every time you shop online with over 4,300 retailers. John Lewis, Argos, Uswitch, eBay and many more are waiting to give a free donation. Plus, once you've signed up and raised £5 in donations, easyfundraising will give us an extra £5 bonus donation.

Signup to support us here <http://www.easyfundraising.org.uk/invite/1e0u9i/>, click 'create account' at the top of the page and select Lyne and Longcross CofE School as your cause. Or you can download the app.

**Match Funding** - Would your company or employer like to boost their community focus and support our fundraising efforts with Match Funding? Many companies will match charitable fundraising activities undertaken by their staff. The school PTFA is a charity which often qualifies for these corporate donations. A match funding scheme can be adopted by any company, so please check with your employers whether a scheme is already in place that you can use, or if they would be willing to set one up. If your company is able to support the school in this way, please get in touch.

**Stikins Name Labels** - Simply Stick in, no sewing and no ironing. Save time and money with one multipurpose name label for cloths, shoes, lunchboxes and all school items. When you buy Stikins name labels and quote our fundraising number **12641** we will receive 30% commission for our school.

**Volunteers and Donations** - If you feel you could volunteer your time to support our fundraising events or would like to offer any other donations to the PTFA please email us.

**Make a difference and get involved. New faces and fresh ideas always welcome!**